

ESSENCE

Calderdale™



Mustard

ESSENCE

The Essence Collection is an expression of urban industrial influence. Purely focused on texture, Essence includes five distressed designs perfect for commercial interiors. Pulling inspiration from the industrial textures around us, these versatile designs bring a unique aesthetic to any space.

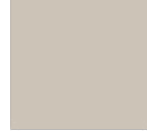
A companion to our Expression collection, the Essence collection is sure to bring a modern and edgy feel to wherever it is applied. This range comes in five unique colourways, each with seven different colours within the design. This selection of shades is the perfect choice to complement any interior design scheme.

Our carpets are all woven in 80% wool and 20% nylon and manufactured in the UK, which guarantees high performing, British quality. Our stock ranges are ready and waiting for your next project!



MUSTARD

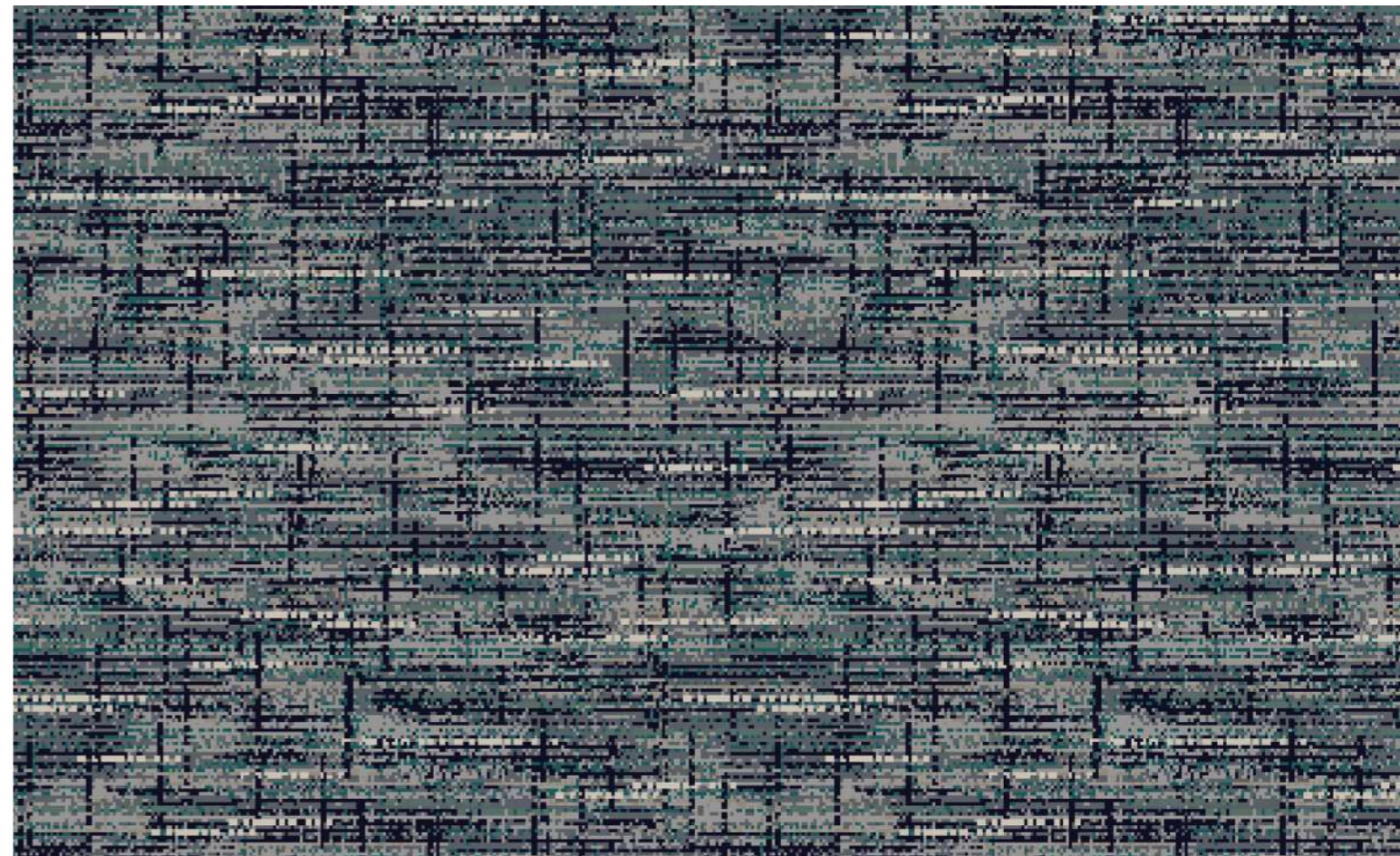
36" (0.91m) | Width
36" (0.91m) +/- 3% | Repeat
Straight | Match





CHIA

Width | 36" (0.91m)
 Repeat | 36" (0.91m) +/- 3%
 Match | Straight



SPEARMINT

Width | 36" (0.91m)
 Repeat | 36" (0.91m) +/- 3%
 Match | Straight



CHILLI

Width | 36" (0.91m)
Repeat | 36" (0.91m) +/- 3%
Match | Straight



NUTMEG

Width		36" (0.91m)
Repeat		36" (0.91m) +/- 3%
Match		Straight



Chilli

Dewsbury Mills, Thornhill Road, Dewsbury, WF12 9QE, United Kingdom
Tel +44 (0) 1924 487 800 Fax +44 (0) 1924 487 901 Email hello@calderdale.co.uk
Registered in England No 02151352 VAT No. 481185061
www.calderdale.co.uk

Calderdale™